



navi[®]inFLa

THE ANTIOXIDANT AND LUBRICATING
OPHTHALMIC SOLUTION FORMULATED
WITH **NATURAL PLANT EXTRACTS**



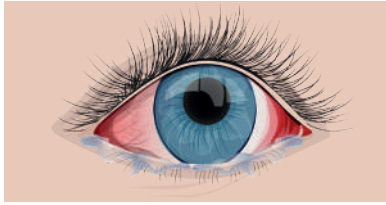
NAVI® INFLA is indicated in the treatment of symptoms related to inflammation, such as:

- Eyestrain cases, due to oxidative stress (pollution, wind, sunlight and computer usage) and in prevention of associated diseases,
- Dry eyestrain due to excessive wearing of contact lens,



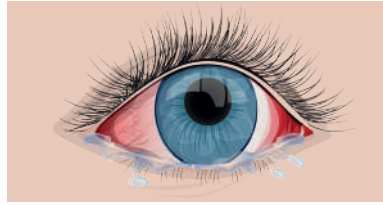
NAVI® INFLA is compatible with all types of contact lenses⁽¹⁾.

- Inflammation due to acute, chronic and allergic conjunctivitis, such as red eye, watery discharge and itching.



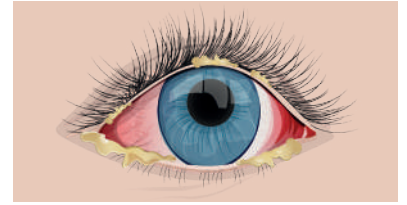
Viral conjunctivitis:

The type of conjunctivitis most commonly associated with the term "pink eye". Appearance: red, itchy, watery eye. Can affect one or both eyes. Highly contagious.



Allergic conjunctivitis:

Very similar in appearance to viral conjunctivitis, but accompanied by nasal congestion, sneezing, eyelid swelling and sensitivity to light. Both eyes are affected. Not contagious.



Bacterial conjunctivitis:

A red eye with a sticky yellow/green discharge. Eyelids may be stuck together upon waking. Can affect one or both eyes. Usually spread by direct contact only.



ROSA DAMASCENA

Petal water extract is known for its cooling and soothing effect, and has been found to be beneficial in ophthalmology⁽²⁾.

Rosa Damascena is also known to be useful in case of oxidant⁽³⁾, inflammatory and microbial states⁽⁴⁾.



CURCUMA LONGA

(Turmeric) Has a strong antioxidant property. It is used to reduce the symptoms of inflammation and is helpful in relieving the burning sensation that is a common complaint in catarrhal and purulent conjunctivitis⁽⁵⁾.



EMBLICA OFFICINALIS

Used as an external application in ocular inflammation⁽⁶⁾. The aqueous extract of E. officinalis is found to be a potent inhibitor of lipid peroxide formation and a scavenger of hydroxyl and superoxide radicals in vitro⁽⁷⁾.

NAVI® INFLA is formulated with **Rosa damascena**, **Emblca officinalis** and **Curcuma longa** which have a **strong antioxidant activity** useful in relieving oxidative stress discomfort thus helping to **reduce the symptoms of inflammation**.



NAVI® INFLA: A NEW FORMULATION

P-PLUS™

- Filmogenous, bioadhesive and lubricant properties
- Improves tear break-up time (TBUT), and symptoms in severe dry eye patients
- A substitute for mucin in artificial tears



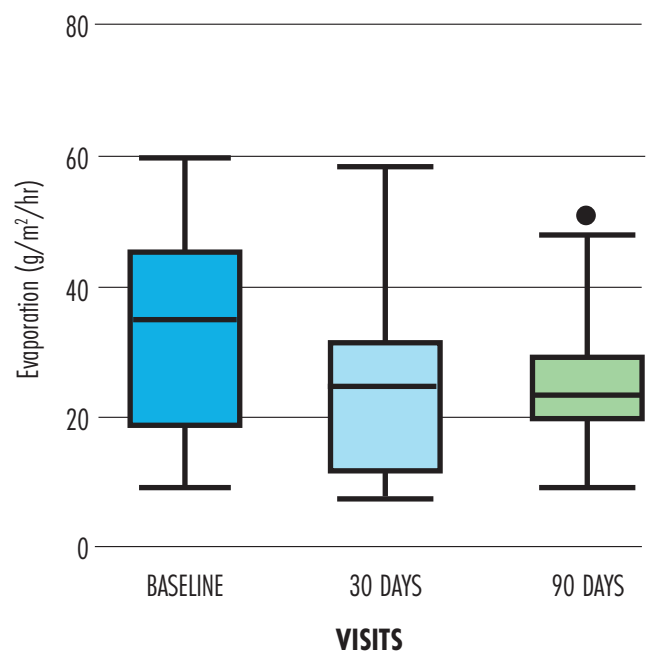
P-PLUS™ AND HPMC

- Keep the surface of the eye well-hydrated and lubricated
- Providing long-lasting relief from dry eye symptoms associated with inflammation

HPMC

- HPMC: Hypromellose, short for HydroxyPropyl MethylCellulose
- Viscoelastic polymer
- Significantly reduces tear evaporation
- Improves dry eye symptoms

HPMC THERAPY



McCann LC1, Tomlinson A, Pearce EJ, Papa V., Effectiveness of artificial tears in the management of evaporative dry eye⁽⁸⁾.

SCO® (Stabilised Complex Oxychloro)



THE ADVANCED PRESERVATIVE TECHNOLOGY

SCO® is an oxidative-type preservative and a mixture of chlorine dioxide, chlorite and chlorate.

When exposed to light, **SCO®** dissociates into components naturally found in the human tears such as sodium chloride, oxygen and water, making it very well tolerated.

SCO® provides nothing but **water, oxygen & natural electrolytes** to the eyes.

SCO® is **SAFE, EFFECTIVE, GENTLE** and **COMFORTABLE**⁽⁹⁾

BENEFITS

- **SCO®** only remains in its original form when inside the eye drop bottle.
- As soon as it leaves the bottle as part of a drop it reacts with light and rapidly dissipates into components naturally found in human tears such as sodium chloride, oxygen and water without causing any cellular damage to the ocular surface.
- **SCO®** has been shown to be much safer on the ocular surface than eye drops preserved with other chemical preservatives.

MEDICAL DEVICE
CLASS II B



- ✓ A NEW FORMULATION BASED ON NATURAL PLANT EXTRACTS
- ✓ ANTIOXIDANT, SOOTHING & LUBRICATING PROPERTIES

NAVI® INFLA PROTECTS, SOOTHES AND MAINTAINS THE PHYSIOLOGICAL CONDITION OF THE OCULAR SURFACE.

COMPOSITION:

Rosa damascena, **Embllica officinalis**, **Curcuma longa**, **P-Plus™**, **Hypromellose**, **SCO®**, EDTA disodium salt, in an isotonic buffered solution pH 7.2.

DESCRIPTION:

NAVI® INFLA is a lubricant and antioxidant ophthalmic solution with plant extracts, Hypromellose and P-Plus™.

P-Plus™ and **Hypromellose** help to keep the surface of the eye well-hydrated and lubricated, providing long-lasting relief from dry eye symptoms associated with inflammation.

NAVI® INFLA is formulated with **Rosa damascena**, **Embllica officinalis** and **Curcuma longa** which have a strong antioxidant activity useful in relieving oxidative stress discomfort thus helping to reduce the symptoms of inflammation.

NAVI® INFLA is preserved with a special preservative system called **SCO®** (Stabilized Complex Oxychloro) that keeps the solution sterile in the bottle. When exposed to light, **SCO®** dissipates into components naturally found in human tears such as sodium chloride, oxygen and water, making it very well tolerated.

INDICATIONS:

Treatment of symptoms related to inflammation, such as red eye, watery discharge and itching, often caused by acute, chronic and allergic conjunctivitis and also oxidative stress emphasised by pollution, wind, sun exposure or computer use.

STORAGE:

Store between 5 and 35°C and protect from a direct source of light.

INSTRUCTIONS FOR USE

NAVI® INFLA IS COMPATIBLE WITH ALL TYPES OF CONTACT LENSES.

- 1- Wash, rinse and dry your hands thoroughly.
- 2- Make sure the seal is intact.
- 3- To open the bottle, unscrew the top completely and break the safety seal.
- 4- Instill 1 or 2 drops in each eye 3 to 6 times a day, as required, or according to the specialist's advice.
- 5- Close the bottle tightly after use.

Images utilisées sous licence de Shutterstock.com



THE NOVAX® RANGE WITH NATURAL ACTIVE INGREDIENTS



BIBLIOGRAPHY

- (1) Compatibility with soft contact lenses.
- (2) Pharmacological Effects of Rosa Damascena Mohammad Hossein - Boskabady, Mohammad Naser Shafei, Zahra Sabeni and Somayeh Amini.
- (3) Ammon H.P.T., Wahl M.A., Pharmacology of Curcuma longa. Planta Medica. 1991; 57(1): 1-7.
- (4) Curcumin: Therapeutic Potential in Ophthalmology Nicola Pescosolido, Rossella Giannotti, Andrea Maria Plateroti, Antonia Pascarella, Marcella Nebbioso Georg Thieme Verlag KG Stuttgart - New York.
- (5) Nadkarni A.K., Indian Materia Medica, Popular Prakashan, Mumbai, India. 1976; 1: 480-484.
- (6) Nadkarni K.M., Indian Materia Medica, Popular Prakashan, Mumbai, India. 1996; 1: 414-418.18. Kirtikar K.R., Basu B.D., Indian Medicinal Plants, International Book Distributors, Dehradun, India, 1987; II: 980.
- (7) European Medicines Agency, Assessment report on Rosa gallica L., Rosa centifolia L., Rosa damascena Mill., flos.
- (8) McCann LCI, Tomlinson A, Pearce EI, Papa V., Effectiveness of artificial tears in the management of evaporative dry eye. Cornea. 2012 Jan; 31(1):1-5.
- (9) Biocompatibility test. Novax Pharma Internal Data.
- (10) Prospective Evaluation of Hypromellose 2% for Punctal Occlusion in Patients With Dry Eye - Leonardo Capita, Maria R. Chalita, Leopoldo Luiz dos Santos-Neto.

NOVAX®
PHARMA

NOVAX® PHARMA
Le Coronado
20, Av. de Fontvieille
MC 98000 MONACO
www.novaxpharma.com

CE
0051

The information reported here is meant to be used only by physicians.

BRNVI REG 00 14/12/2019